



Global Manufacturing Management



From the Shopfloor to the Cloud

Analyze and Optimize Production Data

Cloud-Native for Success

Global and Scalable

With pvaPRO, you can centrally analyze production data already collected with the **MES FASTEC 4 PRO** in the web-based, cloud-native application.

There, reporting components allow you to create custom dashboards or use standardized ones to evaluate your shop-floor data.



Anytime and Anywhere

Your locally stored production data is mirrored to the cloud, making it accessible on **any device at any time**. The web-based dashboards are **intuitively** designed, displaying exactly the information you need.

Cross-Site

While data acquisition was previously limited to a single plant, **multiple locations** can now be analyzed **centrally**. This enables cross-site data analysis, ensuring **transparency** and **greater convenience** within your organization.

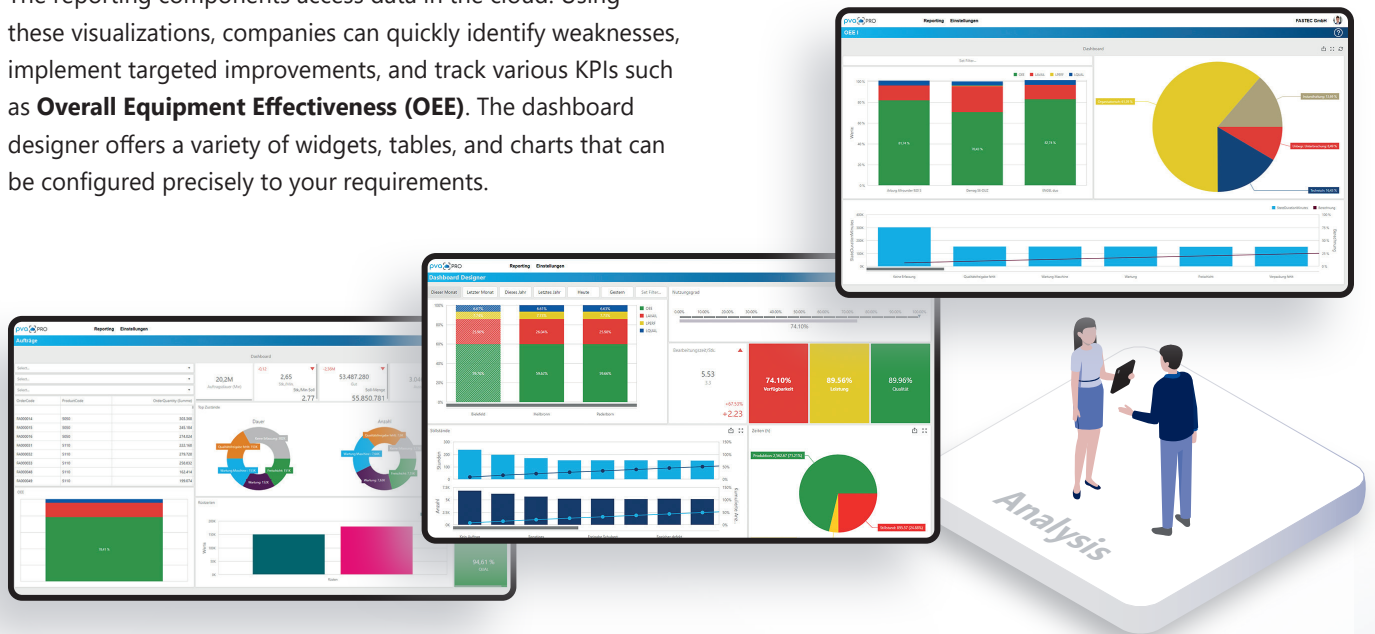
Anytime and Anywhere

Your locally stored production data is mirrored to the cloud, making it accessible on any device at any time. The web-based **dashboards** are intuitively designed, displaying exactly the information you need.

Analyze Production Data in Intuitive Dashboards

With pvaPRO, you can analyze your recorded production data **in standardized or customized dashboards**.

The reporting components access data in the cloud. Using these visualizations, companies can quickly identify weaknesses, implement targeted improvements, and track various KPIs such as **Overall Equipment Effectiveness (OEE)**. The dashboard designer offers a variety of widgets, tables, and charts that can be configured precisely to your requirements.



✓ Insights into Production Productivity and Efficiency:

- Compare different time points: in the OEE comparison
- Gain detailed insights into performance, quality, and availability: in the OEE analysis

✓ Support in Daily Operations:

- Compare yesterday with today: in the status analysis
- Identify scrap and defect-free products: in the order analysis

✓ Company-Wide Transparency beyond Plant Boundaries:

- Instantly recognize production performance worldwide: in the global overview
- Track the time-based development of various KPIs: in the global monthly comparison

✓ Designer for Custom Dashboards:

- Analysis using individually configured widgets and charts
- Live monitoring for real transparency

Global Production Management

Functions and Benefits at a Glance

Cloud

With the use of pvaPRO, the data collected with MES FASTEC 4 PRO from the shopfloor is stored in the cloud. This is made possible by a DataConnector, which copies MDA/PDA data from the local database in the factory and cyclically transfers it to the cloud database. Through the connection to FASTEC 4 PRO, a backup is always created simultaneously.

User Management

From adding and deactivating users to assigning roles and permissions: With pvaPRO, you can manage your users centrally.

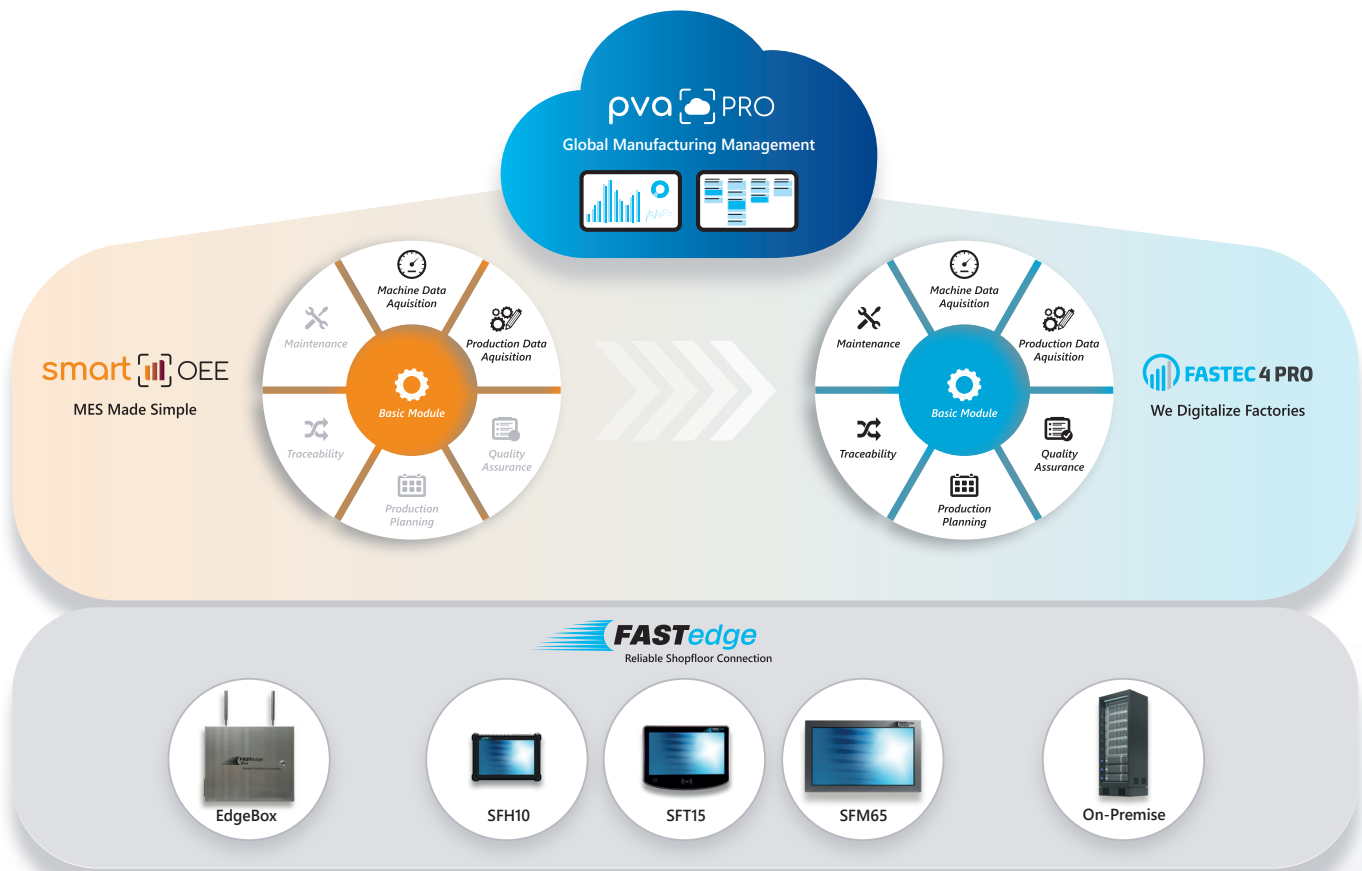
Site Management

All production sites can be conveniently analyzed in pvaPRO from the cloud in one central location. For your organization, this means greater transparency and a comprehensive analysis.

System Environment

Microsoft Azure ensures secure encryption of your data in the cloud. The connection between the MES FASTEC 4 PRO DataConnector and Azure Blob Storage is secured via HTTPS, with authentication between both systems. The data is stored on servers in Western Europe. Additionally, the latest technologies from Microsoft Azure are used.





Our Solutions at a Glance

Live & Global:

pvaPRO centrally manages locations and users in the cloud. Both real-time data and historical production values are visualized in clear dashboards.

Compact & Cost-Effective:

smartOEE enables entry into the MES world. Companies achieve quick successes by collecting machine and operational data and identifying potential improvements. smartOEE justifies the investment in MES FASTEC 4 PRO

Modular & Proven:

With FASTEC 4 PRO, additional functions can be expanded. The MES digitalizes the entire production process and covers all process steps – industry-independent, flexible, and adaptable to individual requirements.

Compatible & Robust:

FASTedge complements the software with matching hardware components, creating a complete IT infrastructure from a single source. The terminal and tablet serve as the interface between human and machine.



pva[]PRO
Global Manufacturing Management

FASTEC 4 PRO
We Digitalize Factories

smart[]OEE
MES Made Simple

FASTedge
Reliable Shopfloor Connection

FASTEC[]services
Enabling Your Digital Journey

Image rights: © FASTEC GmbH. The contents mentioned are purely informative and descriptive. Customers have no claim to the fulfillment of the services. Status June 2025

Your Solution Partner for Future Manufacturing

Since 1995, we have been providing intelligent systems for the manufacturing industry, supporting our customers on their path to digital transformation. More than 400 companies worldwide trust us and achieve remarkable optimizations in their production with our MES solutions. Performance, reliability, and partnership define our approach as we help shape the factory of the future.

Our systems are built on one another and are fully integrated. Their modularity and continuous development allow you to expand MES functions at any time, enabling full production digitalization.

Whatever your requirements, we offer the right solution. We are with you every step of the way – throughout the entire project and beyond.

